

Model JYB-KM

Mini and Low Cost Diffused Silicon Pressure Transmitter



DESCRIPTION

Model JYB-K M is a cost efficient general purpose gage-only diffused Silicon pressure transmitter. Each unit is constructed of welded stainless steel for durability in dry rugged environments. Both gas and liquid pressure overloads of up to 50% over capacity are safely accepted. The transmitter uses our proprietary current output with digital compensation. This design references the primary pressure sensing diaphragm to the atmosphere, and provides a stable zero regardless of the transducer environment.

PRESSURE MEASUREMENT

| | |
|-----------------|--|
| Supply Voltage | 18 to 30VDC or +4.5 to 5.0VDC |
| Operating Range | Any zero based full scale from 0.35 Bar to 100Bar |
| Over Pressure | Three times for the full scale |
| Output Signal | Current two-wire 4-20mA (<500Ω); 0~5VDC Or 0.5~4.5VDC(>10KΩ) |
| Pressure Media | Fluids compatible with 316 stainless steel and Hastelloy C276 (NACE compatible grades) |

PERFORMANCE SPECIFICATIONS

| | |
|---------------------|--|
| Accuracy | ±0.2%, ±0.5%, ±1.0% (25℃) |
| Pressure Response | <200ms |
| Long Term Stability | <0.1% FS per year |
| Temperature Range | Compensation form 0 to 60℃ Working from -20 to 85℃ |
| Temperature Effects | Max 1.0% FS typical over 0 to 60℃ Max 2.0% FS typical over -20 to 85℃ |

PHYSICAL CONNECTION

| | |
|-----------------------|--|
| Pressure Connection | G1/4 female with Option B screw-in adaptor |
| Electrical Connection | M12×1 Bayonet plug (IP67) DIN43650 Plug/Socket (IP65) |

FEATURES

- 0.0015 % FS/°F temperature effect
- 0.2%, 0.5 % or 1.0% accuracy
- 0.35 to 100 Bar range
- True gage or absolute
- 4 to 20 mA output / 0~5VDC output
- Isolated double wall construction
- Enhanced temperature stability,
- ROHS and CE Certification

ORDERING CODES

| JYB-KM | JYB-KBM is a safety model for Exib II BT4 | |
|--------|---|--|
| I1 | Current two-wire 4 ma to 20 ma | |
| V1 | 0 ~ 5VDC | |
| V2 | 0.5 ~ 4.5VDC (+5VDC supply) | |
| M1 | M12×1 Bayonet plug (IP67) | |
| M2 | DIN43650 Plug/Socket (IP65) | |
| N1 | M20x1.5 female screw-in adaptor | |
| N2 | G1/4 female with Option adaptor | |
| S3 | 0-0.35Bar | |
| S4 | 0-1 Bar | |
| S5 | 0-2 Bar | |
| S6 | 0-6 Bar | |
| S7 | 0-10 Bar | |
| S8 | 0-16 Bar | |
| S9 | 0-20 Bar | |
| S10 | 0-40 Bar | |
| S11 | 0-100 Bar | |
| B1 | Gauge | |
| B2 | Absolute | |
| A1 | ±0.2% | |
| A2 | ±0.5% | |
| A3 | ±1.0% | |

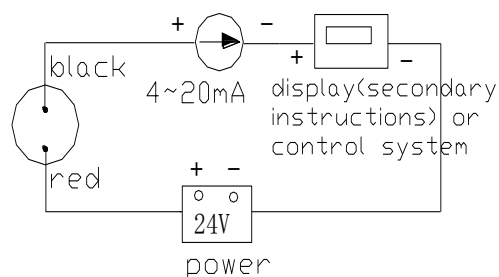
Model JYB-KM

Mini and Low Cost Diffused silicon Pressure Transmitter

ELECTRICAL CONNECTION

| Code | 1(Red) | 2(Yellow) | 3(Blue) | 4(Black) |
|------|---------|------------|----------|----------|
| II | +supply | NC | Shell | -supply |
| V1/2 | +supply | output | Shell | -supply |

- Current two-wire 4ma to 20mA

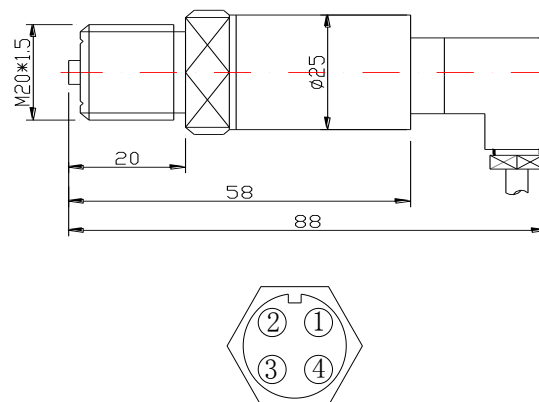


NOTES

- 1• Because the sensor belongs to the precision component, in order to prevent damages of the product, don't disassemble voluntarily and touch a film slice, please.
- 2• When make a survey of high-pressure, must install buffer equipment in the exit of the connection between the sensor and the medium, which can avoid the momentary pulse high-pressure and the damages of sensors.
- 3• Accuracies stated are expected for best fit straight line for all errors including linearity, hysteresis & non-repeatability thru zero.

MOUNTING DIMENSION

- M12×1 Bayonet plug (IP67)



- DIN43650 Plug/Socket (IP65)

